




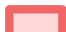

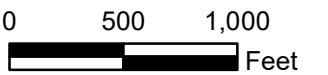


**Legend**

-  City Boundary - Oskaloosa
-  City Boundary - University Park
-  Major Highways
-  Rail Lines (Active)
-  US 63 - IA 23 Connector
- Certified Site Boundary**
- PARCELS**
-  Agreement Signed
-  Transload Site



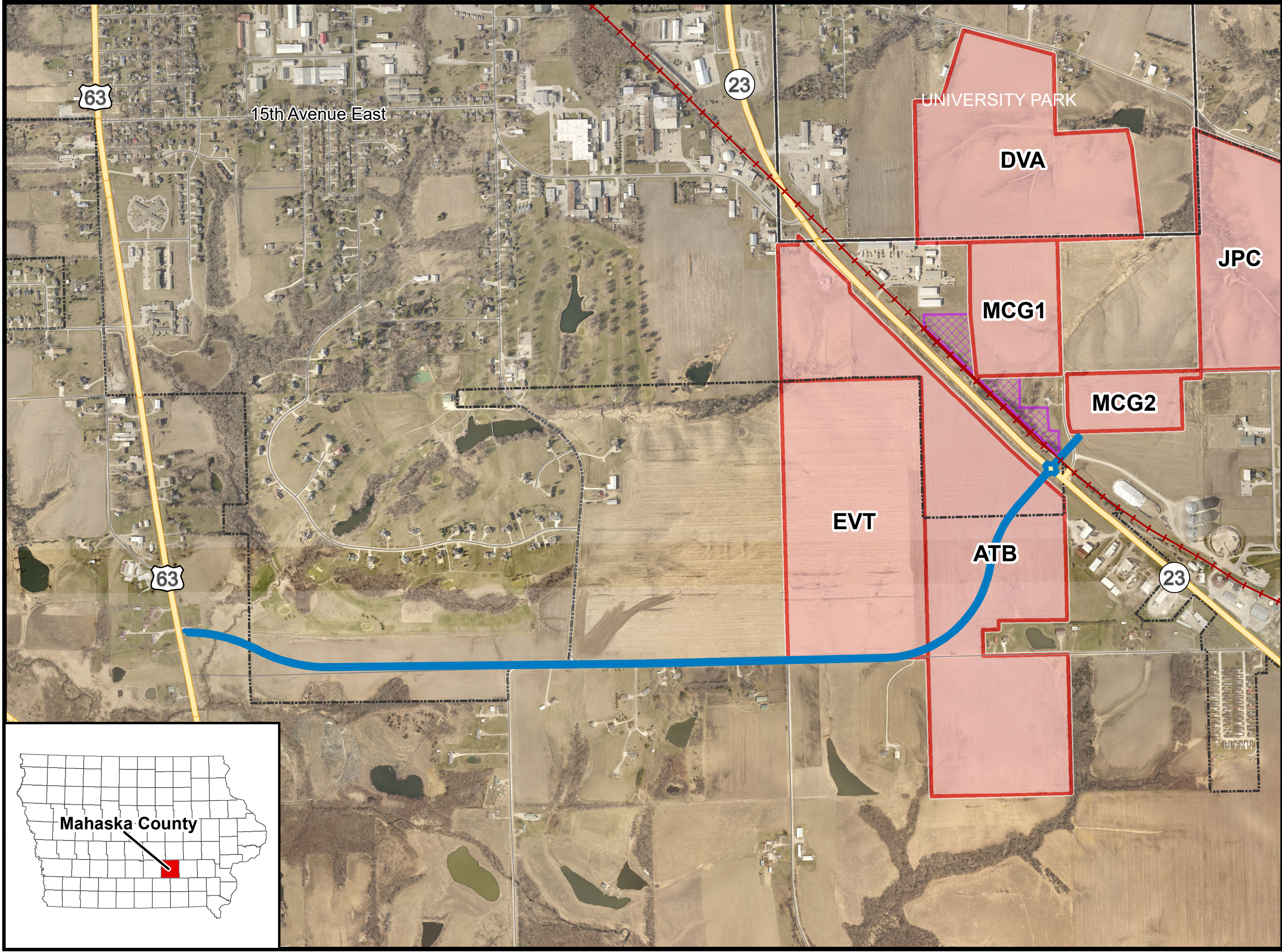
  
**McCLURE**™  
Your vision. Engineered here.  
1360 NW 121st Street  
Clive, Iowa 50325  
P: 515-964-1229

NOTICE:  
McClure Engineering Company waives any and all responsibility and liability for problems which arise from failure to follow these Plans. Specifications, and the engineering intent they convey, or for problems which arise from failure to obtain and/or follow the engineers' guidance with respect to any errors, omissions, inconsistencies, ambiguities, or conflicts which are alleged.

COPYRIGHT:  
Copyright and property rights in these documents are expressly reserved by McClure Engineering Company. No reproductions, changes, or copies in any manner shall be made without obtaining prior written consent from McClure Engineering Company.

ENGINEER: BB      DRAWN BY: BB      CHECKED BY: BK

Project # 191211-004



15th Avenue East

UNIVERSITY PARK

DVA

JPC

MCG1

MCG2

EVT

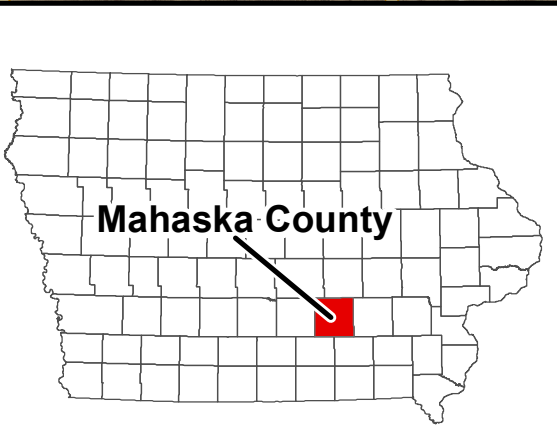
ATB

63

23

63

23



Mahaska County